

Amigo

AMIGO FRONT OR REAR BINDING RAILS ASSEMBLY INSTRUCTIONS

The front or rear binding rails set consists of:

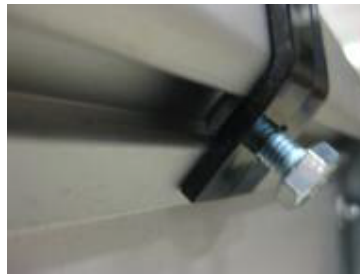
- 1 binding rails
- 2 black caps
- 2 railing holders
- 2 bolts M8 x 16
- 2 hammer head nuts M8
- 4 Parker screws



Place the two railing holders on the front or rear wall.



Place a hammer head nut in the T-groove behind the railing holder and fit an M8 x 16 bolt.



Place the binding rails through the railing holders and secure the railing holders 16 cm from the sides of the trailer.

Next, use a 13 mm spanner to tighten the M8 bolts.

Do this for every railing holder.



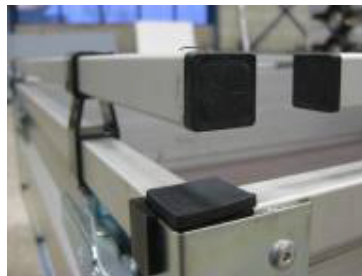
Amigo

AMIGO FRONT OR REAR BINDING RAILS ASSEMBLY INSTRUCTIONS

Use a cordless drill to screw the Parker screws into the wall and the binding rails from the inside of the trailer. Do this for both railing holders.



Place the black caps in the ends of the binding rails.



Net weight of the front or rear binding rails set: 1 kg