

# MODEL R REFRIGERATED TRAILER



**HAPERT**  
WWW.HAPERT.COM

# MODEL R PLASTIC COVER



**HAPERT**  
WWW.HAPERT.COM

BOX VAN TRAILER,  
LOW LOADER,  
SINGLE AXLE

# MODEL R

**HAPERT**  
WWW.HAPERT.COM

**HAPERT REFRIGERATED TRAILERS: AS COOL AS A CUCUMBER!**  
The professional model R refrigerated trailers "55" and "25" are equipped as standard with a self-supporting chassis, 2 rear doors with stainless steel fittings & fastenings and a refrigeration unit mounted on the reinforced front (the unit includes a CEE plug with an electrical connecting cable and 220V interior lighting that can be switched on and off from the refrigeration unit (photo 21).

model R box van with 2 rear doors	inside dimensions in mm			passage at the rear	thickness of the plate	loading floor height in mm	Maximum Gross Weight in kg	approx. empty weight in kg
	length	width	height					
R 1350	2440	1220	1520	1220x1520	55	520	1350	650
R 1350	2440	1220	1820	1420x1820	55	520	1350	675
R unbraked	2500	1290	1515	1220x1480	25	500	750	400
R 1350	2500	1290	1515	1220x1480	25	520	1350	515
R 1350	2500	1290	1815	1220x1780	25	520	1350	530

### Model R "25":

The sides and the roof of this reliable refrigerated trailer are made from 25-mm thick polyester sandwich panels filled with insulation material. The 2 rear doors have a stainless steel locking mechanism ( photo 19). A large number of functional options are available including a special coating on the plywood floor, an aluminium tear plate, aluminium bumper strips, heavy duty prop stands (photo 25), side door(s) (photo 22), etc. The standard (exterior) dimensions are 2500 x 1300 mm. However, the model R "25" is also available in a large number of different sizes up to 4000 mm length, 1800 mm width and 2100 mm height.

### Model R "55":

This model is the most completely fitted refrigerated trailer in the HAPERT range of products and is delivered as standard from our plant with:

- standard (exterior) dimensions of 2500 mm x 1300 mm.
- various heights: 1500 mm, 1800 mm or 2100 mm.
- sides (made from one piece), roof and floor

made from 55 mm thick polyester sandwich panels filled with insulation material.

- a rear frame made completely of stainless steel and rear doors fitted with 2 locks (photo 20).
- the trailer interior is fitted with aluminium bumper strips on the front and sides.
- the 55 mm thick floor can be have an optional special, cast coating or an aluminium tear plate.



### MODEL R WITH A PLASTIC COVER: DISTINCTIVE AND AERODYNAMIC STYLING!

The easy to manoeuvre, single-axle model R trailer is not only ideal for carrying valuable products from A to B, but can also help you in a large number of other situations and is as versatile as a trailer can be. And... if you should ever take too much stuff on holiday, this model is also the answer. In short: multi-functional! The extraordinarily well-equipped basic model has an eye-catching, impact-resistant, plastic cover and is fitted as standard with light-grey sides and a downward-hinged tailgate.

This model is available in 2 sizes:

- 2500 x 1300 x 1050 mm (hood height approx. 650 mm)
- 3000 x 1500 x 1400 mm (hood height approx. 1000 mm).

A number of interesting options are also available including:

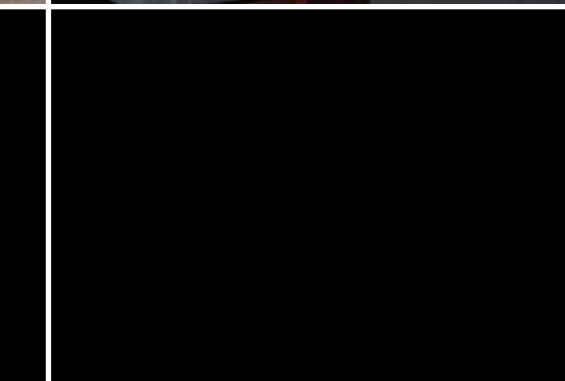
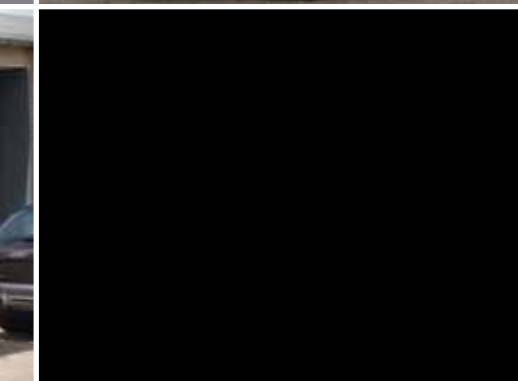
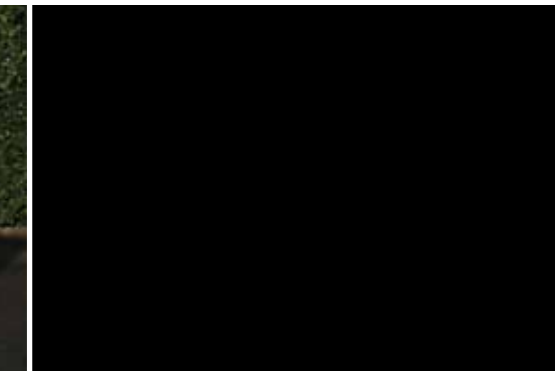
- white or dark-grey sides
- raised sides with 2 rear doors instead of a tailgate.
- Maximum Gross Weight 1500 kg instead of 1350 kg.

For more information about the many additional options and accessories, contact your local HAPERT dealer or go to WWW.HAPERT.COM for more information about.

model R box van with cover	inside dimensions in mm			loading floor height in mm	Maximum Gross Weight in kg	approx. empty weight in kg
	length	width	height			
R unbraked	2500	1300	1050	500	750	270
R 1350	2500	1300	1050	520	1350	330
R 1500	3000	1500	1400	530	1500	400



All specifications are subject to change, code 330-2



# MODEL R



1



9



10

**HAPERT**  
WWW.HAPERT.COM

# MODEL R SALES TRAILER



14

**HAPERT**  
WWW.HAPERT.COM

Chassis completely welded and hot-dip galvanised. ▼  
All trailers are fitted with a jockey wheel and the braked models have a screwed V-drawbar.



**BOX VAN TRAILERS FROM HAPERT; TREND SETTING AND DISTINCTIVE!**  
HAPERT has been the number one brand in the trailer sector for many years now. In the Benelux countries, Hapert is the undisputed market leader in the sector for light trailers with an overrun brake. HAPERT trailers are available in many European countries from professional dealers who have specialist knowledge of the products and personal involvement with the brand and the HAPERT organisation.  
Thanks to the wide range available, you will always find a HAPERT trailer that precisely meets your personal requirements. Users know that HAPERT trailers are all well-thought-out quality products that prove themselves time and time again under the most varied of conditions.

▼ 2 Handles on the front for easily pushing the trailer into position.



◀ Stainless steel hinges, lock(s) and fasteners.



Option: trailer fitted with roof rack rails made of aluminium or galvanised steel. Also available with a ladder roll at the rear.



Store away box (plywood/aluminium profiles), ▲ external dimensions 990x405x 690 mm (also available in other sizes).

**HAPERT TRAILERS: PRACTICAL, FUNCTIONAL AND VERSATILE!**  
Box van HAPERT trailers are optimally equipped for transporting all sorts of goods and materials! All model R trailers are supplied with a fully welded and hot-dip galvanised steel chassis as standard.  
The sides are made from 15 mm thick sandwich panels with a multi-layer plywood core or 25-mm thick polyester sandwich panels filled with insulation material. The extraordinarily well-equipped basic box van model has 2 rear doors and stainless steel hinges, locks and fasteners!  
A large number of functional options are also available including:  
- side door(s) (photo 1)  
- plastic or aluminium draw-shutter(s) (photos 7 and 12)  
- side flap(s) (photo 11)  
- ramptail (photos 4, 5 and 6)  
- double-hinged ramptail (photo 8)  
- hinged roof (photo 6)  
- a model built as a trailer with a cover (photos 9 and 10)

**COMPREHENSIVE RANGE OF ORIGINAL ACCESSORIES.**  
You can also choose from a large number of practical accessories including a spoiler (photo 2), a bevelled front (photo 3), windows, (roof) hatches, roof rack rails (photos 9 and 12) and a ladder roll, a spare wheel, (heavy duty) prop stands, a plastic or wooden store away box etc.

model R box van with 2 rear doors	inside dimensions in mm			loading floor height in mm	Maximum Gross Weight in kg	approx. empty weight in kg
	length	width	height			
R unbraked	2500	1300	1500	500	750	370
R 1350	2500	1300	1500	520	1350	425
R 1350	2500	1300	1800	520	1350	455
R 1350	3000	1300	1800	520	1350	510
R 1350	3000	1500	1800	520	1350	530
R 1500	3000	1500	1800	530	1500	550

Are you looking for an other dimension? ▶  
It is possible to produce the model R in a large number of different sizes (up to a maximum of 4000 mm length, 2400 mm width and 2300 mm height)  
For more information about the complete series and/or about the original HAPERT accessories, feel free to contact your local HAPERT dealer completely free of obligation. He would be pleased to tell you more about the virtually unlimited possibilities!

**COMFORTABLE, PRACTICAL AND RELIABLE: THE HAPERT SALES TRAILERS!**  
The HAPERT name has been associated with reliable quality for decades. We only use top-grade materials and components! Because of this, the cleverly designed HAPERT trailers stand out for their safety, versatility and ease of use. All HAPERT - sales trailers are designed and built in such a way that you can do your work optimally.

The model R trailers are supplied from the factory with:  
- a fully welded and hot-dip galvanised steel chassis  
- the sides are made from 25 mm thick polyester sandwich panels filled with insulation material  
- the standard floor is made of plywood with an anti-slip upper layer  
- Maximum Gross Weight 1350 kg.  
- king-size dimensions (l. x w. x h.): approx. 3500 x 2000 x 2300 mm.  
- wheels with tyres integrated in the wheel arch boxes.  
- a sales counter on the right  
- an access door at the rear  
- with an extendable support in each corner

A large number of functional options and interesting accessories are also available including:  
- alternative dimensions varying from: length from 2000 to 4000 mm, width from 1100 to 2400 mm different heights up to 2300 mm  
- floor with a special coating or aluminium tear plate  
- extra sales counters  
- plastic or plywood store away box



11a



11b



12



16



2



3



4



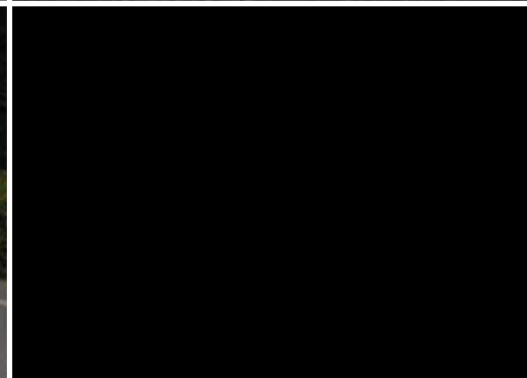
6



7



5



8a



8b



15a



15b



15c

