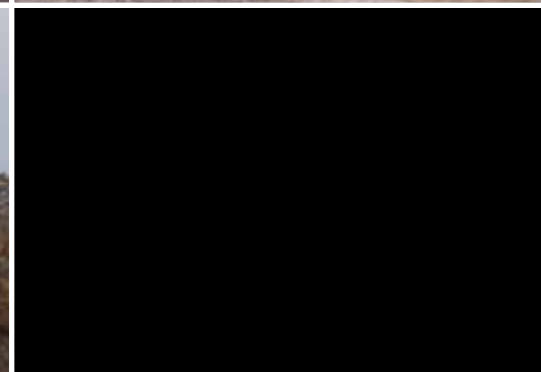


THREE WAY TIPPERS,
DOUBLE AND THREE
AXLES

MODEL E
MODEL E MULTI
MODEL E MULTI FERRO
MODEL E MULTI XXL

HAPERT
WWW.HAPERT.COM



MODEL E



THE TOUGH HAPERT MODELS E, E-MULTI AND E-MULTI FERRO: VERSATILE AND RELIABLE!

The basic versions are constructed with:

- a completely welded and hot-dip galvanised chassis
- a built-in, solid, hydraulic cylinder operated by a hand-pump
- high-quality rubber torsion axles
- 300 mm high aluminium dropsides fitted with robust, integrated fasteners
- 4 removable corner pillars
- a bottom-hinged tailgate
- welded-in-place fastening hooks
- Different numbers of fastening brackets (photo 7a and b) are integrated in the sides depending on the length of the trailer. This "HAPERT" load securing system is TÜV approved and DIN EN 75410-1 certified!
- a heavy duty support wheel

The tipper trailers are also fitted with a galvanised steel plate on the plywood floor (model E and E Multi) or a 3 mm thick hot-dip galvanised steel floor constructed from a single sheet (E Multi Ferro).

WORLD CLASS THREE-WAY TIPPER TRAILERS!

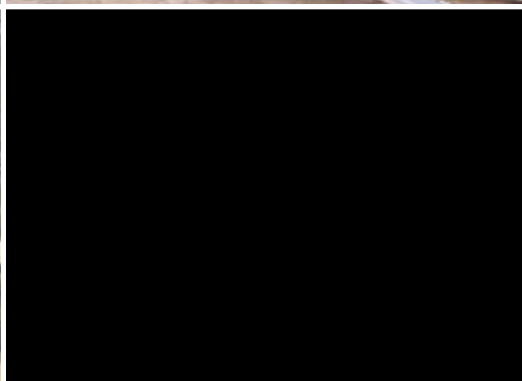
The HAPERT name has been associated with reliable quality for decades... and with good reason! HAPERT stands for high-quality materials and components, for well-conceived designs, and for quality products that prove themselves time and time again under the most diverse conditions.



◀ THE E-MULTI AND E-MULTI FERRO MODELS: 2 SUPER MULTI(FUNCTIONAL) TRAILERS!

The most popular options, at lucrative prices, are combined in this package. Includes:

- a lowered chassis with tyres 195/50 R13 tyres
- a pair of aluminium '2500' loading ramps
- ramps integrated under the floor
- adjustable heavy duty prop stands
- electric operation via battery
- battery charger (provided separately)



MODEL

E MULTI

E MULTI FERRO



HAPERT

WWW.HAPERT.COM

Model E / E Multi / E Multi Ferro	inside dimensions in mm			loading floor height in mm	Maximum Gross Weight in kg	approx. empty weight in kg
	length	width	height			
E 2700	3050	1800	300	760	2700	700
E 2700 Multi	3050	1800	300	670	2700	850
E 2700 Multi Ferro	3050	1800	300	680	2700	870
E 2700 Multi Ferro	3750	1800	300	680	2700	1000
E 3000 Multi	3350	1800	300	685	3000	920
E 3500 Multi	3350	1800	300	685	3500	970
E 3500 Multi Ferro	3350	1800	300	690	3500	990
E 3500 Multi Ferro	3750	1800	300	690	3500	1040

▲ For additional information ask your local HAPERT-dealer or see the website: WWW.HAPERT.COM

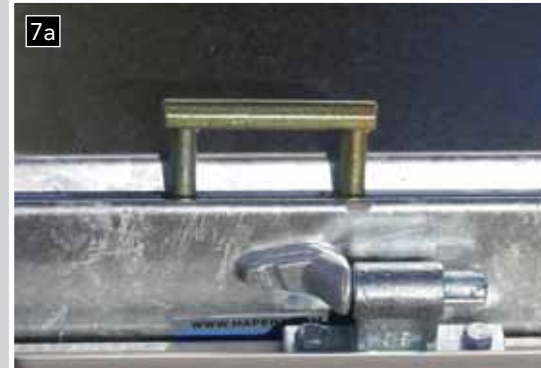


The E-Multi Ferro model has a 3 mm thick hot-dip galvanised steel floor constructed from a single sheet. Available in three sizes (l x w): 3050 mm. x 1800 mm., 3350 mm. x 1800 mm. and 3750 mm. x 1800 mm.

OPTIONS AND ACCESSORIES

Many options and accessories are also available, such as:

- electric control powered by a battery (photos 8a and b) that is completely enclosed in a protective box made of galvanised steel with a plastic cover
 - an (emergency) hand pump (photo 9)
 - a top- and bottom-hinged tailgate
 - a lowered chassis with 195/50 R13 tyres (photo 1)
 - 400 or 500 mm high raised aluminium dropsides
 - 300 mm high aluminium walls (photo 3)
 - a rack (such as a ladder rack), left and right, removable
 - a wire rack on all sides, removable, height 700 mm (photo 5)
 - a removable front rack
 - a winch mounted to a bracket on the front side
 - integrated loading ramps
 - heavy duty prop stands
 - light protection (photo 10)
 - Available in 2000 / 2200 and 2400 mm wide!
- Also available as 'MULTI' version (see photo 1 and description).



8a

10

7a

8b

9

MODEL E MULTI XXL



THE LARGEST HAPERT TIPPER: THE E-MULTI XXL MODEL!

This efficient all-rounder with maximum dimensions of 4000x2000 mm has a wide range of uses, including the transport of cars, earth-moving machines, bulky goods, etc.

This three-way tipper is standard equipped with many conveniences, such as:

- a lowered chassis with 195/50 R13 tyres
- 2 aluminium '2500' loading ramps integrated under the floor
- adjustable heavy duty prop stands
- operated electrically via a battery (battery charger supplied separately)
- Different numbers of fastening brackets are integrated in the sides depending on the length of the trailer. This system is TÜV approved and DIN EN 75410-1 certified! The "HAPERT" load securing system gives you even more certainty and peace of mind when transporting a wide variety of goods, cars and machines. Put simply: a MULTI (functional) heavy weight!

OPTIONS.

Can be optionally equipped with a height-adjustable draw-bar, bracket-mounted winch, aluminium side walls, racks (such as a ladder rack or a wire rack) and a canopy. Also available as a tridem axle trailer.



All specifications are subject to change, code 815-4



model E MULTI XXL	number of axles	inside dimensions in mm			loading floor height in mm	Maximum Gross Weight in kg	approx. empty weight in kg
		length	width	height			
E 3000 Multi XXL	2	4050	1800	300	660	3000	1100
E 3500 Multi XXL	2	4050	1800	300	660	3500	1120
E 3500 Multi XXL	2	4050	2000	300	660	3500	1160
E 3500 Multi XXL	3	4050	1800	300	660	3500	1240
E 3500 Multi XXL	3	4050	2000	300	660	3500	1280



11

12