

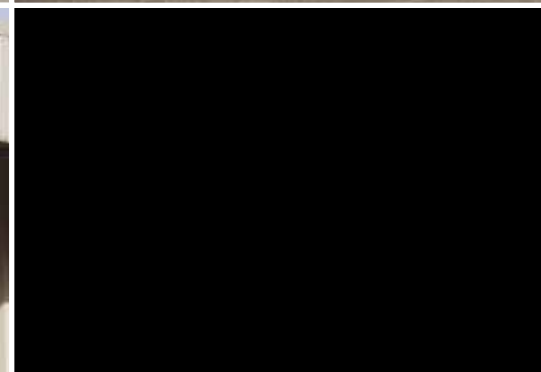
MODEL G

MODEL AL

TRANSPORTER, TILT-BED

TRANSPORTERS:

- HYDRAULIC TILTING
- TYRES UNDER THE LARGE LOADING FLOOR



MODEL G TRANSPORTER G AUTO



Wheel stops "Auto" (pair, photo 1, 2 and 3) ►►
Plywood floor (reaching to the drive-on ramps, photo 2) ►►

TRANSPORTERS FROM HAPERT; 100% RELIABLE!

HAPERT has been the number one brand in the trailer sector for many years now. In the Benelux countries, HAPERT is the undisputed market leader in the sector for light trailers with an overrun brake. HAPERT trailers are available in many European countries from professional dealers who have specialist knowledge of the products and personal involvement with the brand and the HAPERT organisation. Thanks to the wide range available, you will always find a HAPERT trailer that precisely meets your personal requirements. Users know that HAPERT trailers are all well-thought-out quality products that prove themselves time and time again under the most varied of conditions.

EXTREMELY SOLID AND VERSATILE: THE HAPERT G-MODELS.

The G models are extremely versatile transporters with a fully welded and full-immersion galvanised steel chassis. The G models have a hydraulic tilting mechanism, standard dimensions of 4050 mm x 2010 mm and are available in the 2700, 3000 and 3500 kg weight classes. On request, Hapert can produce longer (up to 6000 mm!) and wider (up to 2410 mm!) versions of this tilt-bed trailer. The full-featured standard model is fitted with a double-acting, hydraulic cylinder with a hand pump, fastening brackets integrated in the sides (photo 7) and binding rails fitted on the sides and front. In addition, a multi-adjustable hand-operated winch and support are fitted at the factory! The G models are, of course, fitted with high-quality rubber-suspended axles and a robust, heavy duty jockey wheel. Standard fittings on the G-Transporter include a plywood floor and two 750 mm long hinged drive-on ramps mounted on the rear of the trailer.



COMPREHENSIVE RANGE OF PRACTICAL OPTIONS.

A wide range of functional accessories and practical options are also available. You can also choose from:

- a continuous 750 mm high tailgate (photo 8)
- aluminium dropsides incl. high tailgate (models with a length of ≥ 4500 mm are as standard fitted with central pillars; photo 9)
- a model with 3 axles (photo 10)
- weldmesh extension, removable (photo 11)
- box van in various dimensions (photo 13 and 14)
- high cover in various heights (photo 15)

In short: because of the huge range of available trailers, you will always find a HAPERT trailer that precisely meets your personal requirements.



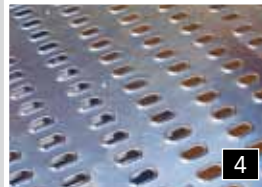
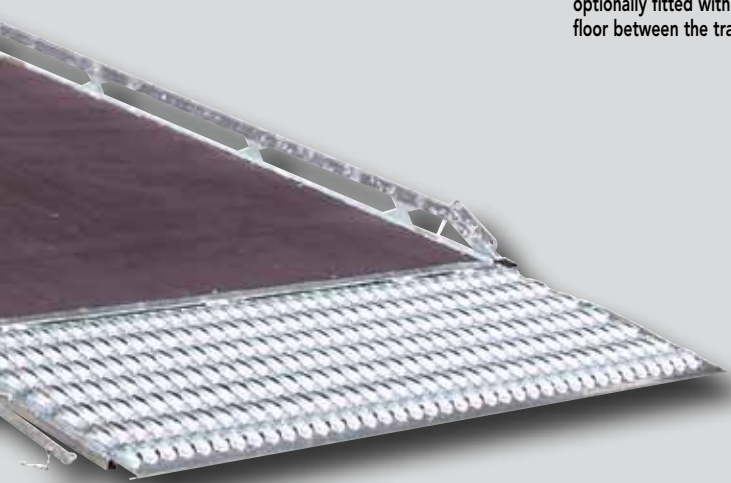
◀◀◀ Wheel stop "Multi" (single, photo 5)
◀◀ Wheel stops "Transporter" (pair, photo 6)
◀ Fastening brackets integrated in the sides (photo 7)





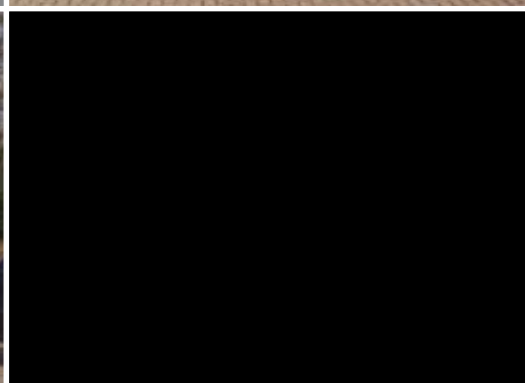
THE G-AUTO, THE IDEAL CAR TRANSPORTER!

2 HAR-profile plates (photo 4; steel tracks perforated with oval holes) instead of a plywood floor are standard fittings on the G-AUTO. The HAR-profiles provide excellent grip and, in combination with, for example, "Auto" model wheel stops (photo 1, 2 and 3) and lashing strips, can be used to secure the load so it is completely safe. The approx. 110 mm-long, removable aluminium drive-on ramps are optionally fitted with a plywood (photo 2) or HAR-profile floor between the tracks (photo 12).



model	inside dimensions in mm			loading floor height in mm	Maximum Gross Weight in kg	approx. empty weight in kg
	length	width	height			
G 2700 transporter	4050	2010	80	610	2700	660
G 2700 transporter	4550	2010	80	610	2700	730
G 3500 transporter	4550	2010	80	630	3500	780
G 3500 transporter	5000	2010	80	630	3500	840
G 3500 transporter	5000	2210	80	630	3500	880

▲ Are you looking for an onther dimension? (it is possible te produce the model G up to 6000 mm long and 2400 mm wide). For additional information ask your local HAPERT dealer or see the website: WWW.HAPERT.COM



12

13

14

15

MODEL AL

TRANSPORTER TILT-BED



THE AL MODEL- A VERSATILE TILT-BED TRANSPORTER!

The tiltable AL-TRANSPORTER has a fully welded and full-immersion galvanised steel chassis, dimensions of 4050 mm x 2010 mm and 4550 mm x 2010 mm and is available in the 2000 kg and 2700 kg weight classes.

The lowered chassis with 195/50 R13 tyres and plywood floor (with an anti-slip coating that is tightly secured to the cross-members and longitudinal runners welded onto the chassis) are standard features of this versatile trailer. The two (2000-mm long) aluminium drive-on ramps are stowed under the loading floor. Besides the fastening brackets integrated in the sides (photo 7), this trailer's standard features include a binding rail mounted on the sides and front. A multi-adjustable hand-operated winch and support is also fitted at the factory.



All specifications are subject to change, code 831-1

model AL transporter tilt-bed	inside dimensions in mm			loading floor height in mm	Maximum Gross Weight in kg	approx. empty weight in kg
	length	width	height			
AL 2000	4050	2010	80	650	2000	685
AL 2700	4050	2010	80	650	2700	690
AL 2700	4550	2010	80	650	2700	735

For the AL-TRANSPORTER with dimensions of 4550 mm x 2010 mm, a special "Circuit" package has been developed. At a very reasonable additional cost, this tilt-bed trailer can be fitted with 2 (approx. 3500-mm long) tapering aluminium drive-on ramps and a "MULTI" wheel stop (photo 5). The "Circuit" package makes it possible to transport virtually every type of car safely and securely. ▶

